

www.centiel.com

# Reliable IT power protection




**centiel**  
*continuous power availability*

**EssentialPower™ X1 RT**

The single-phase UPS  
from 1 kVA to 20 kVA



PARA MÁS INFORMACIÓN o PREGUNTAS  
CONSULTA A TU ASESOR,  
ESTAMOS PARA AYUDARTE 

Síguenos en las redes sociales para obtener la  
información más reciente de productos y servicios



www.powerfulenergyroma.com mramirez@powerfulenergyroma.com WhatsApp: 55 1406.1538



## EssentialPower™, the single-phase UPS

EssentialPower™ is the online, true double-conversion, single-phase UPS (Uninterruptible Power Supply).

From 1 to 20kVA, EssentialPower™ provides the most flexible and reliable solution ideal for small network devices, servers, point-of-sale, workstation clusters and light-industrial installations. EssentialPower™ satisfies any entry-level mission critical application demanding high availability and flexibility.

## Flexibility for any application


From 2U to 5U, mono-mono or tri-mono, EssentialPower can be used as standalone tower or rack-mounted UPS on any mission critical application.

EssentialPower offers built-in internal batteries from 1 to 6 kVA, and the possibility to connect matching battery cabinets for autonomies of up to 4 hours

## Benefits

- Standalone tower or 19" rack-mount configurations
- Connectivity: USB, RS-232, potential-free contacts
- EPO contact inputs for remote shutdown
- Cold start
- Parallel operation from 6 kVA to 20 kVA
- Frequency converter operation (50 Hz or 60 Hz)
- Connect up-to 4 battery modules to achieve hours of autonomy times



PARA MÁS INFORMACIÓN o PREGUNTAS  
CONSULTA A TU ASESOR,  
ESTAMOS PARA AYUDARTE 

Síguenos en las redes sociales para obtener la información más reciente de productos y servicios





## Connectivity

With a variety of options, like, communication cards, expansion relays, SNMP and ambient monitoring applications, **Essential Power™** can be easily integrated into any environment and building management system.

## Reliability

- True-online double conversion, pure sinewave output
- Reliable digital power conversion architecture
- Wide range input window from 110 to 300 Vac
- Extended battery life I – U (DIN 41773)
- Patented backup runtime estimated on LCD

## Ease of Service

- Frontal access battery replacement
- Clean and clear user-friendly display
- Records event log and alarms up to 500
- Personalization & intelligend self-diagnostic
- Easy firmware Flash upgrade
- Manual maintenance bypass switch (optional)

## Battery autonomy

### EssentialPower™ 11RT

UPS Type	1kVA UPS-EP001-11-I03-2U	2kVA UPS-EP002-11-I06-2U UPS-EP002-11-I06-3US	3kVA UPS-EP003-11-I06-2U UPS-EP003-11-I06-4US	6kVA UPS-EP006-11-E-2U UPS-EP006-11-I20-4U	10kVA UPS-EP010-11-E-3U
Battery Cabinet	CAB-EPBAT06-I06-2U	CAB-EPBAT12-I12-2U	CAB-EPBAT12-I12-2U	CAB-EPBAT20-I20-3U	CAB-EPBAT20-I20-3U
Battery Type	7Ah	7Ah	9Ah	7Ah	9Ah
UPS	9	10	7	9	6
UPS + 1 EPBATxx	22	23	18	24	17
UPS + 2 EPBATxx	39	39	31	42	21
UPS + 3 EPBATxx	55	56	44	61	29
UPS + 4 EPBATxx	70	73	58	81	44

### EssentialPower™ 31RT

UPS Type	10kVA UPS-EP010-31-E-3U	15kVA UPS-EP015-31-E-5U	20kVA UPS-EP020-31-E-5U
Battery Cabinet	CAB-EPBAT20-I00-3U	CAB-EPBAT20-I00-3UH	CAB-EPBAT20-I00-3UH
Battery Type	9Ah	9Ah	9Ah
UPS	N.A.	N.A.	N.A.
UPS + 1 EPBATxx	7	4	<3
UPS + 2 EPBATxx	19	11	7
UPS + 3 EPBATxx	31	18	13
UPS + 4 EPBATxx	45	27	19

\*Autonomies @70% load.

PARA MÁS INFORMACIÓN o PREGUNTAS  
CONSULTA A TU ASESOR,  
ESTAMOS PARA AYUDARTE



Síguenos en las redes sociales para obtener la información más reciente de productos y servicios



## The single-phase ATS-16-32A

The ATS (Automatic Transfer Switch) provides redundant power to single input devices by managing two separate, independent power sources.

### Reliability

**High automatic transfer speed between two sources (8 – 12 ms).**

**Takes up minimal space: 1U for 16 A and 2U for 32 A.**

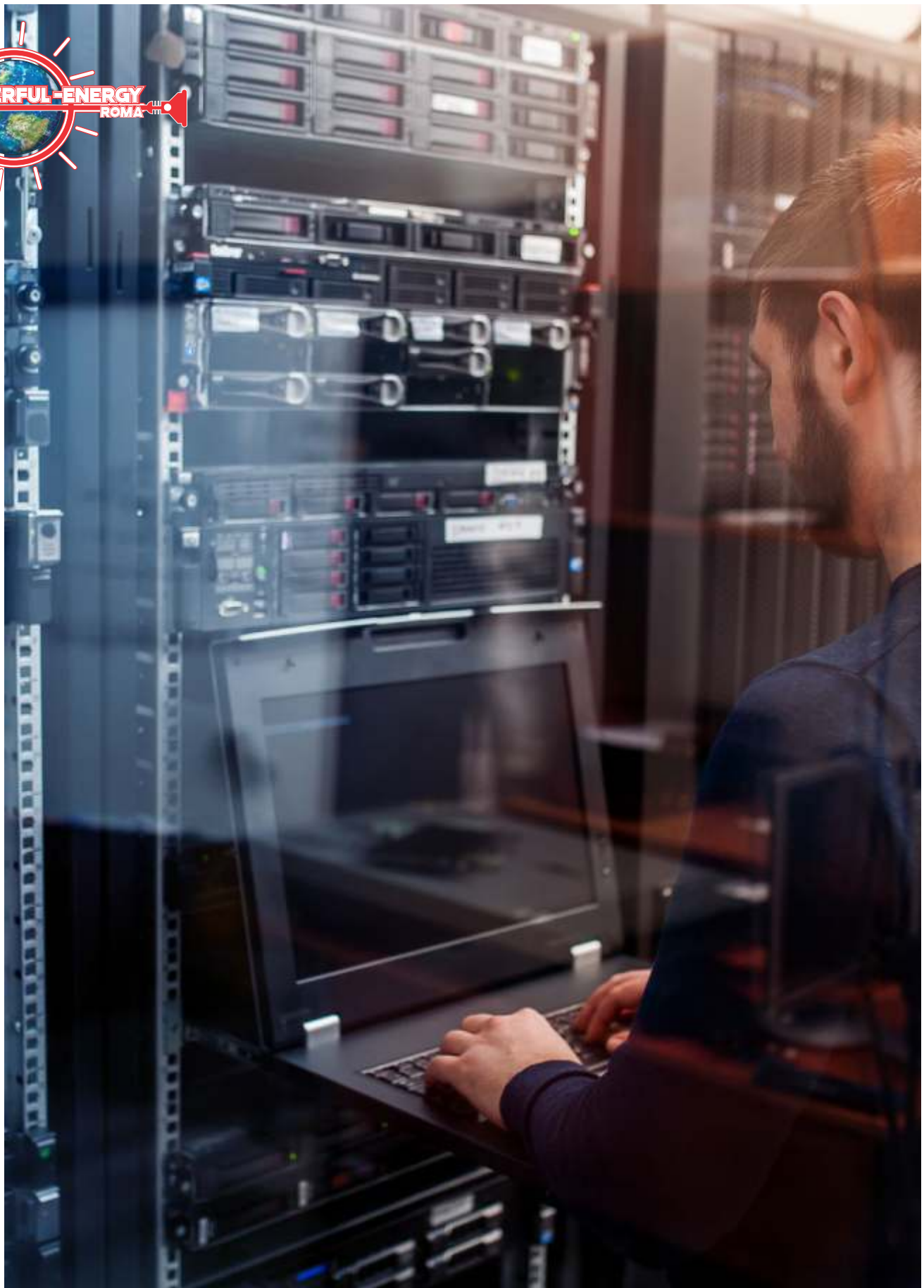
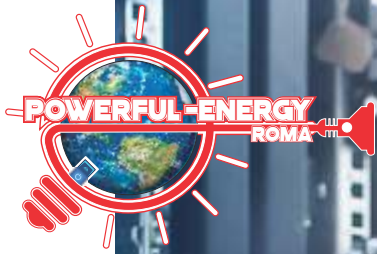
**Includes USB, EPO, RS232 for dry contacts and slots for optional communication cards.**




### Technical Datasheet single-phase ATS

	Model	16A ATS-UP016-U1	32A ATS-UP032-U2
General data	Rated Current	16 A	32 A
	Rated voltage	200/208/220/230/240 Vac (±5%/10%/15%/20%)	
Input	Frequency	50/60 Hz (±5%/10%/15%/20%)	
	Input sockets	2 x IEC-C20	2 x 30 A terminal blocks
	Rated voltage	200/208/220/230/240 Vac	
Output	Maximum output current	16 A	32 A
	Transfer time	8-12 ms	
	Output sockets	8 x IEC-C13 1 x IEC-C19	12 x IEC C13 2 x IEC C19 1 x 32 A terminal blocks
	Protection	Downstream short circuit	
	Dimensions (WxDxH) mm	440x275x44	440x275x88
Physical	Weight (kg)	4	6
	Operation Temperature	-5°C to + 40°C	
Environmental parameters	Operation Humidity	0-90%RH (without condensing)	
	Built-in communication ports	RS232, USB, EPO, relay card with dry contacts (5 out)	
Communications	User interface	LED (source A and/or B, fault status) LCD (parameters: alarms, faults)	
	Optional accessories	RS485, SNMP/Web cards	
	Standards and certifications	IEC EN 62368-1, IEC EN 62310-2	
	Marking	CE	

The information in this document is subject to change without notice and should not be construed as a commitment by Centiel S.A.



PARA MÁS INFORMACIÓN o PREGUNTAS  
CONSULTA A TU ASESOR,  
ESTAMOS PARA AYUDARTE 

Síguenos en las redes sociales para obtener la  
información más reciente de productos y servicios



[www.powerfulenergyroma.com](http://www.powerfulenergyroma.com) [mramirez@powerfulenergyroma.com](mailto:mramirez@powerfulenergyroma.com) WhatsApp: 55 1406.1538



	1kVA UPS-EP001-11-103-2U	2kVA UPS-EP002-11-106-2U UPS-EP002-11-106-3US	3kVA UPS-EP003-11-106-2U UPS-EP003-11-106-4US	6kVA UPS-EP006-11-E-2U UPS-EP006-11-120-4U	10kVA UPS-EP010-11-E-3U	
<b>General data</b>	<b>Model</b>					
	<b>Output rated power</b>	1000VA /900W	2000VA /1800W	3000VA /2700W	6000VA /6000W	10000VA /10000W
	<b>Output power factor</b>	0,9	0,9	0,9	1	1
	<b>Topology</b>	Online double conversion				
	<b>Internal Batteries</b>	YES	YES	YES	2U: N.A.; 4U: YES	N.A.
<b>Parallel Configuration</b>	N.A.	N.A.	N.A.	Up to 4 units	Up to 4 units	
<b>Input</b>	<b>Voltage range*</b>	110-300 Vac (Single+G)		110-280 Vac (Single+G)		
	<b>Frequency range</b>	44-66Hz (auto sensing)		45-70Hz (auto sensing)		
	<b>Input power factor</b>	≥ 0.99 @ 100% linear load				
	<b>Input Current Distorsion</b>	< 7% (full load)	< 7% (full load)	< 7% (full load)	< 5% (full load)	< 5% (full load)
<b>Output</b>	<b>Output voltage</b>	220/230/240 Vac (Single + G)		200/208/220/230/240 Vac (Single + G)		
	<b>Output voltage distortion</b>	<3%@100% Linear Load; <6% @100% Non-Linear Load		<2%@100% Linear Load; <7% @100% Non-Linear Load		
	<b>Output voltage regulation</b>	±1%				
	<b>Frequency range</b>	±1Hz or ±3Hz (selectable)				
	<b>Crest factor</b>	3:1				
	<b>Output waveform</b>	Pure sine wave				
	<b>Output sockets</b>	3 x IEC C13	6 x IEC C13	6 x IEC C13 1 x IEC C19	Terminal blocks	Terminal blocks
	<b>Overload Capacity Inverter</b>	<105%continuous 106-120% for 30 seconds transfer to bypass. 121-150% for 10 seconds transfer to bypass.		<105%continuous 105-125% for 60 to 30 seconds transfer to bypass. 125-150% for 30 seconds to immediately transfer to bypass.		
<b>Efficiency</b>	<b>Line Mode</b>	Up to 92%	Up to 92%	Up to 92%	93%	93%
	<b>High Efficiency Mode</b>	≥97%			Up to 98%	
<b>Battery</b>	<b>Type</b>	12V VRLA, AGM (maintenance-free lead acid battery)				
	<b>Battery Configuration</b>	1x3x7Ah	1x6x7Ah	1x6x9Ah	E: External, 16/18/20 (std) 12-14 (opt) 120: 20x5Ah Internal	E: External, 16/18/20
	<b>Charging Current</b>	2.1 A	1.5 A	1.5 A	2 A	2 A
	<b>Recharge time (to 90%)</b>	4 hours				
<b>Functions</b>	<b>Multi-Mode</b>	Normal/ ECO/ CVCF				
	<b>Audible or Visual</b>	Line failure/ Battery low/ Transfer to Bypass/ System Fault				
	<b>Full protection</b>	Overload, Over temperature, Short circuit, Discharge, Overcharge				
	<b>DC start</b>	Yes (standard)				
	<b>Programmable outlet</b>	Yes (standard)	Yes (standard)	Yes (standard)	N.A.	N.A.
<b>Physical</b>	<b>Dimensions (WxHxD,mm)</b>	2U: 440x88x405	2U: 440x88x600 3US: 440x132x432	2U: 440x88x600 4US: 440x176x432	2U: 440x88x685 4U: 440x176x685	3U: 440x132x685
	<b>Net Weight (kgs/lbs)</b>	11.7/25.8	21.8/48.1	24.6/54.2	E: 18.5/40.7 120: 60/132.3 (5Ahx20)	21.5/47.4
<b>Environmental</b>	<b>Operation Temperature**</b>	0-40°C / 32-104°F				
	<b>Operation Humidity</b>	20-95%RH (without condensing)				
	<b>Altitude</b>	1000m/3280ft without derating				
	<b>Noise Level</b>	50dBS @ 1-meter front			≤55dBA @ 1 meter	≤60dBA @ 1 meter
<b>Communications</b>	<b>Standard</b>	RS-232, USB, EPO, additional Slot for optional cards				
	<b>Option</b>	RS485 (Modbus), Dry Contact Relay, SNMP/WEB Card				
	<b>User Interface</b>	LEDs + LCD: Input: Voltage/Frequency; Output: Voltage/Current/Frequency/Load %; Battery: Voltage/Autonomy/Temperature				
<b>Standards and certifications</b>	<b>Safety</b>	IEC / EN62040-1			IEC / EN62040-1, UL1778	
	<b>EMC</b>	IEC / EN62040-2 (C2)			EN62040-2, EN61000-3-2, EN61000-3-3, FCC Class A	
	<b>Performance</b>	IEC / EN62040-3				
	<b>Manufacturing</b>	ISO 9001:2015, ISO 14001:2015 / CE, UL, cUL, FCC				

The information in this document is subject to change without notice and should not be construed as a commitment by Centiel S.A.

\* Depending on the load percentage \*\* To be verified accordingly to the battery parameters

PARA MÁS INFORMACIÓN o PREGUNTAS  
CONSULTA A TU ASESOR,  
ESTAMOS PARA AYUDARTE



Síganos en las redes sociales para obtener la información más reciente de productos y servicios



# EssentialPower™ 31RT



	10kVA UPS-EP010-31-E-3U	15kVA UPS-EP015-31-E-5U	20kVA UPS-EP020-31-E-5U
<b>General data</b>	10000VA /9000W	15000VA /13500W	20000VA /18000W
	0,9		
	Online double conversion		
<b>Input</b>	NO		
	Up to 4 units		
	277 - 485 Vac (3Ph + N +PE)		
<b>Output</b>	45-65Hz (auto sensing)		
	≥ 0.95 @ at linear load		
	<6% at linear load		
<b>Efficiency</b>	220/230/240 Vac (Single + G)	200/208/220/230/240 Vac (Single + G)	
	<3%@100% Linear Load; <5% @100% Non-Linear Load		
	±1%		
<b>Battery</b>	±1Hz or ±3Hz (selectable)		
	3:1		
	Pure sine wave		
<b>Functions</b>	Terminal blocks		
	<105%continuous		
	105-120% for 200 to 30 seconds transfer to bypass		
<b>Physical</b>	120-150% for 30 seconds to 0.1 seconds		
	Up to 91%		
	Up to 95%		
<b>Standards and certifications</b>	12V VRLA, AGM (maintenance-free lead acid battery)		
	E: External: 20		
	2 A	4.5 A	4.5 A
<b>Environmental</b>	External Battery Dependent		
	Normal/ ECO/ CVCF		
	Line failure/ Battery low/ Transfer to Bypass/ System Fault		
<b>Communications</b>	Overload, Over temperature, Short circuit, Discharge, Overcharge		
		Yes (standard)	
	N.A.		
<b>Standards and certifications</b>	3U: 440x132x680	5U: 440x220x720	5U: 440x220x720
	28 /61.75	36 / 79.4	36 / 79.4
	0-40°C / 32-104°F		
<b>Standards and certifications</b>	20-95%RH (without condensing)		
	1000m/3280ft without derating		
	≤50dBA @ 1 meter	≤60 dBA @ 1 meter	
<b>Standards and certifications</b>	RS-232, EPO and additional Slot for optional cards		
	USB, RS485 (Modbus), Dry Contact Relay, SNMP/WEB Card		
	LEDs + LCD: Input: Voltage/Frequency; Output: Voltage/Current/Frequency/Load %; Battery: Voltage/Autonomy/Temperature		
<b>Standards and certifications</b>	IEC / EN62040-1		
	IEC / EN62040-2 (C2)		
	IEC / EN62040-3		
<b>Standards and certifications</b>	ISO 9001:2015, ISO 14001:2015 / CE, UL, cUL, FCC		

The information in this document is subject to change without notice and should not be construed as a commitment by Centiel S.A.



**2U**  
1-6 kVA



**3U**  
10kVA



**4U**  
6kVA with Batteries



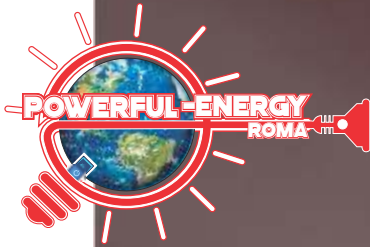
**5U**  
15,20kVA

**PARA MÁS INFORMACIÓN o PREGUNTAS  
CONSULTA A TU ASESOR,  
ESTAMOS PARA AYUDARTE**



Síganos en las redes sociales para obtener la información más reciente de productos y servicios






**centiel**  
continuous power availability



[www.centiel.com](http://www.centiel.com)



BRC\_PT\_Rev1.0\_09/24\_EN

PARA MÁS INFORMACIÓN o PREGUNTAS  
CONSULTA A TU ASESOR,  
ESTAMOS PARA AYUDARTE 

Síguenos en las redes sociales para obtener la  
información más reciente de productos y servicios



[www.powerfulenergyroma.com](http://www.powerfulenergyroma.com) [mramirez@powerfulenergyroma.com](mailto:mramirez@powerfulenergyroma.com) WhatsApp: 55 1406.1538